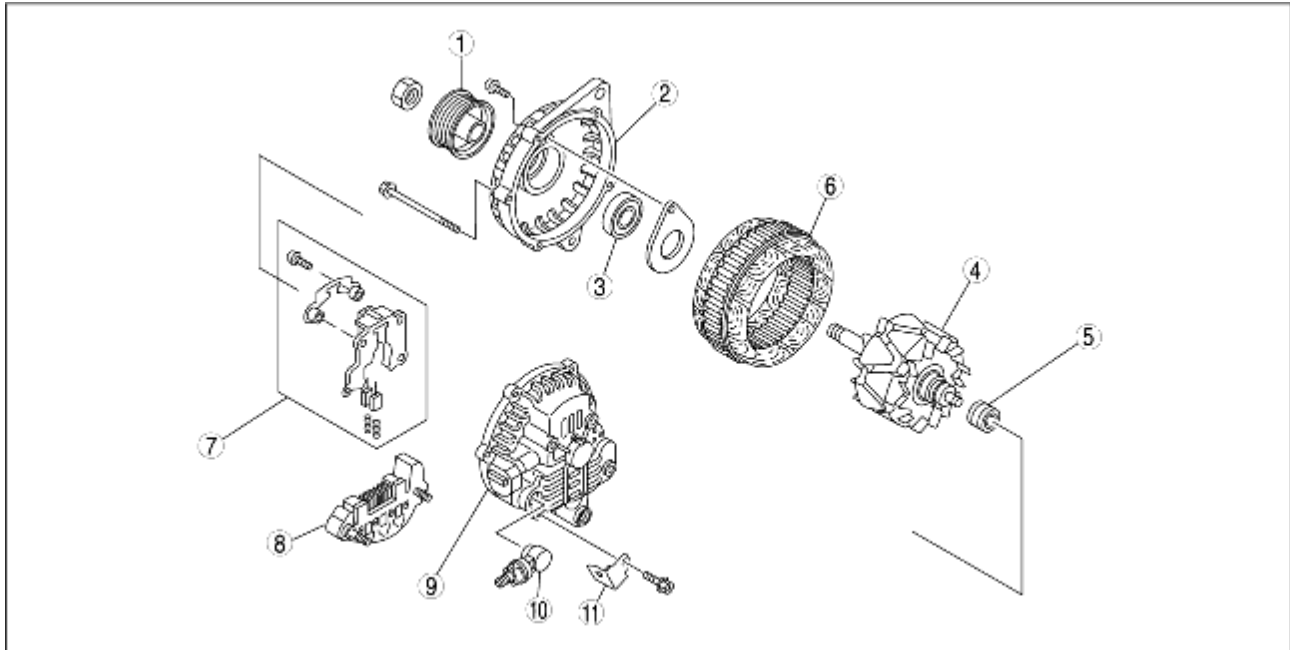


## GENERATOR CONSTRUCTION [ZJ, Z6]

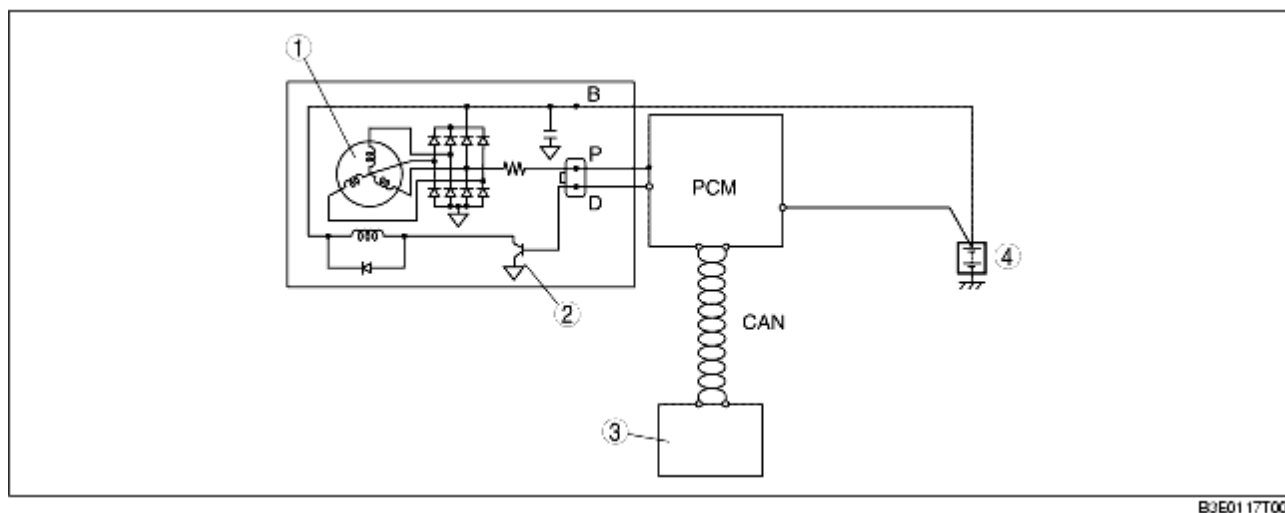
B3E011701008T06

- With the elimination of the voltage regulator, generator control is carried out by the PCM. (See [GENERATOR CONTROL OPERATION \[ZJ, Z6\]](#).) Exciting current in the field coil is increased or decreased by the duty signal from the PCM sent to the power transistor built into the generator.



B3E01 17T008

1	Pulley
2	Front cover
3	Front bearing
4	Rotor
5	Rear bearing
6	Stator
7	Regulator component (built-in power transistor)
8	Rectifier
9	Rear cover
10	Terminal B component
11	Bracket



B3E0117T007

1	Stator coil
2	Power transistor
3	Instrument cluster (warning light)
4	Battery

• The generator warning light in the instrument cluster illuminates under the following conditions. (See [DTC DETECTION LOGIC AND CONDITIONS \[ZJ, Z6\]](#).)

- Charging system voltage problem
- Charging system voltage low
- Charging system voltage high
- IAT sensor circuit low input
- IAT sensor circuit high input